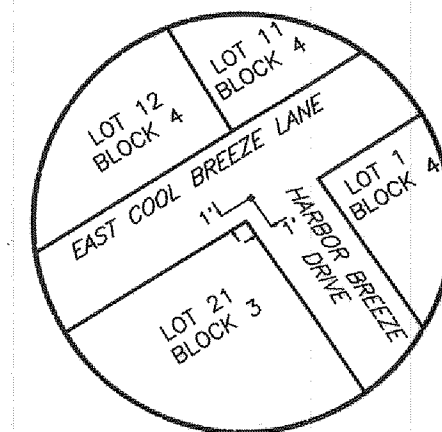


VICINITY MAP - MONTGOMERY COUNTY KEY MAP PAGE 124 BLOCK J



BENCH MARK DETAIL - 3" BRASS DISK SET IN A CONCRETE COLUMN 6" IN DIAMETER, THREE FEET DEEP AND BURIED FLUSH WITH NATURAL GROUND STAMPED: GH 3 - ELEV. 217.50

-CENTERLINE DATA-

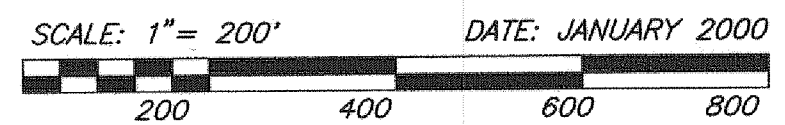
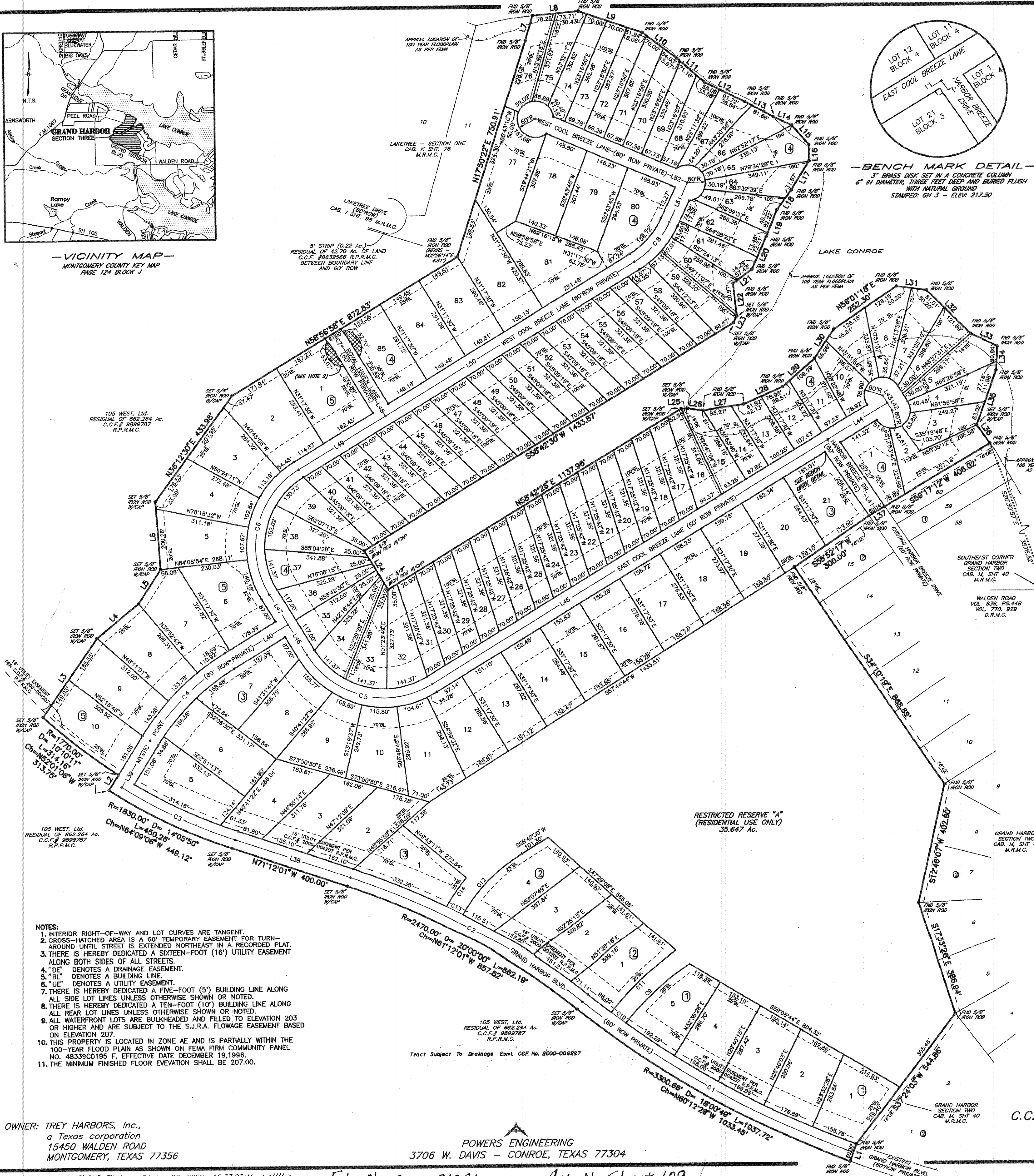
LINE/CURVE	BEARING/CHORD	DIST/ARC	DELTA	RADIUS	CHORD DIST
L38	N71°12'01"W	400.00'	---	---	---
L39	N31°55'33"E	181.32'	---	---	---
L40	N58°42'30"E	227.09'	---	---	---
L41	N34°07'43"W	286.74'	---	---	---
L42	N31°17'30"W	30.00'	---	---	---
L43	N31°17'30"W	30.00'	---	---	---
L44	S58°42'30"W	232.85'	---	---	---
L45	S58°42'30"W	1536.41'	---	---	---
L46	N31°17'30"W	117.00'	---	---	---
L47	N31°17'30"W	117.00'	---	---	---
L48	N31°17'30"W	269.89'	---	---	---
L49	N58°42'30"E	337.26'	---	---	---
L50	N58°42'30"E	967.31'	---	---	---
L51	N25°01'37"E	143.20'	---	---	---
L52	N66°43'10"W	543.85'	---	---	---
C1	N60°12'26"W	1028.29'	18°00'49"	3270.66'	1024.06'
C2	N61°12'01"W	872.66'	20°00'00"	2500.00'	868.24'
C3	N64°38'14"W	412.37'	13°07'34"	1800.00'	411.47'
C4	N45°19'01"E	373.95'	26°46'57"	800.00'	370.56'
C5	S78°17'30"E	471.24'	90°00'00"	300.00'	424.26'
C6	S13°42'30"W	471.24'	90°00'00"	300.00'	424.26'
C7	N36°20'28"W	52.88'	10°05'57"	300.00'	52.81'
C8	N41°52'03"E	176.36'	33°40'53"	300.00'	173.83'

-RESERVE DATA-

CURVE	BEARING/CHORD	ARC	DELTA	RADIUS	CHORD DIST
C9	S47°32'49"W	288.24'	18°08'21"	910.46'	287.04'
C10	N53°25'43"W	60.03'	1°03'41"	3240.66'	60.03'
C11	N47°02'38"E	294.19'	17°22'08"	970.46'	293.06'
C12	S44°21'14"W	284.55'	28°42'31"	567.89'	281.58'
C13	N62°59'34"W	60.08'	1°21'38"	2530.00'	60.07'
C14	N34°59'49"E	115.80'	10°34'00"	627.89'	115.63'

-BOUNDARY DATA-

LINE	BEARING	DISTANCE
L1	S2°47'10"W	60.00'
L2	N32°53'49"E	60.00'
L3	N35°01'07"E	314.58'
L4	N50°42'24"E	178.43'
L5	N32°42'27"E	135.04'
L6	N03°53'27"W	223.35'
L7	N16°51'01"E	85.49'
L8	N84°45'43"E	151.97'
L9	S71°14'07"E	222.37'
L10	S52°34'35"E	142.10'
L11	S48°52'42"E	120.70'
L12	S63°36'42"E	147.80'
L13	S61°14'42"E	108.50'
L14	S65°05'42"E	65.30'
L15	S41°28'42"E	84.90'
L16	S00°07'42"E	53.70'
L17	S31°35'18"W	114.40'
L18	S36°10'18"W	81.10'
L19	S22°20'18"W	95.70'
L20	S24°19'18"W	116.50'
L21	S53°17'18"W	78.40'
L22	S06°07'42"E	107.70'
L23	S28°29'18"W	25.44'
L24	S31°17'30"E	150.00'
L25	N87°41'18"E	21.88'
L26	S82°40'42"E	51.70'
L27	N81°33'18"E	135.40'
L28	N66°08'18"E	140.90'
L29	N49°14'18"E	139.50'
L30	N33°54'18"E	114.80'
L31	S81°56'42"E	100.40'
L32	S45°09'42"E	202.90'
L33	S63°51'42"E	97.60'
L34	S03°39'18"W	78.00'
L35	S19°42'18"W	194.70'
L36	S35°59'40"E	73.24'
L37	S59°46'58"W	60.14'



FINAL PLAT
GRAND HARBOR
SECTION THREE
125 RESIDENTIAL LOTS * 5 BLOCKS
1 RESERVE

A SUBDIVISION OF 141.687 ACRES OF LAND
IN THE OWEN SHANNON SURVEY, A-36
OUT OF 662.264 AC. AS RECORDED UNDER
C.C.F.# 9899787 OF THE REAL PROPERTY RECORDS OF
MONTGOMERY COUNTY, TEXAS

OWNER: TREY HARBORS, Inc.,
a Texas corporation
15450 WALDEN ROAD
MONTGOMERY, TEXAS 77356

POWERS ENGINEERING
3706 W. DAVIS - CONROE, TEXAS 77304